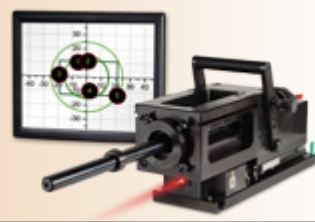


WF series weapon fixture



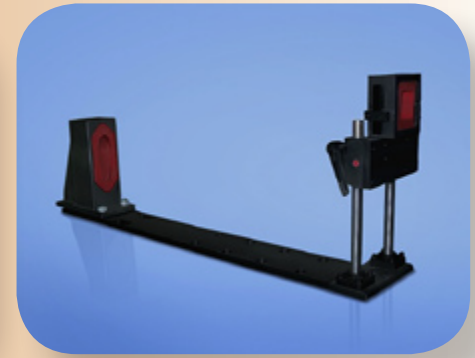
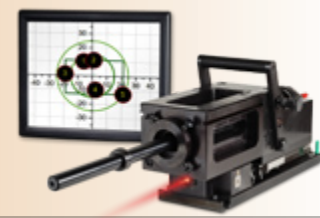
- ***Universally applicable for all hand firearms***
- ***High repeating accuracy for long and short firearms***
- ***All models can be combined with series 1060 firing rest***
- ***Optional electromagnetic triggering available (also for sustained firing)***
- ***Special fixture available for fully automatic and precision weapons***

Consulting, planning, measuring and documenting
with system solutions from

www.drello.de

DRELO
Ballistics

WF series weapon fixture



The WF 1011 weapon fixture is universally applicable for all long firearms.

It is suitable for both single and sustained firing.

The front clamping position is freely selectable depending on the length of the weapon used.

Electromagnetic triggering is available as an option.

The WF 1012 weapon fixture is suitable for both pistols and revolvers.

We supply specially-made clamping jaws for every weapon model.

The WF 1012 fixture is equipped with recoil damping.

Electromagnetic triggering is available as an option.

Protective clamping jaws ensure no damage to weapons during use.

The WF 1063 special weapon fixture is suitable for fully automatic and precision weapons.

Weapons are fixed by matching shaped fittings. The repeating accuracy of both single and short burst firing is maximized. Because of the easy to use clamping mechanism, the changing time is reduced to a minimum. This fixture is therefore particularly suitable for function firing of weapons of the same type.

Electromagnetic triggering suitable for sustained firing is available as an option.

Technical data

Model

	WF 1011	WF 1012	WF 1063
Short firearms			
Pistol	-	•	-
Revolver	-	•	-
Long firearms			
Rifles	•	-	on request
Shotguns	•	-	on request
Sports rifles	•	-	on request
Assault rifles	•	-	•
Precision rifles	-	-	•
Sniping rifles	-	-	≤ 12.7 mm (.50)
Machine guns	-	-	≤ 12.7 mm (.50)
Dimensions, overall			
Length	960 mm	240 mm	1000 mm
Width	300 mm	210 mm	150 mm
Height	250 mm	185 mm	300 mm
Weight	approx. 5 kg	approx. 1.5 kg	approx. 10 kg
Accessories			
Electromagnetic triggering	•	•	•

Consulting, planning, measuring and documenting
with system solutions from

www.drello.de

